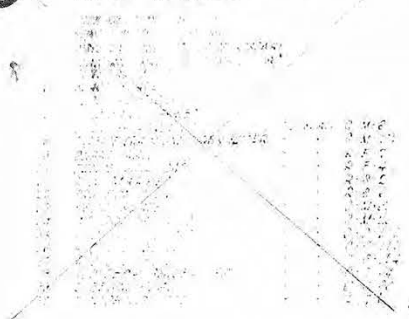


6

INDEX TO SHEETS



STATE OF LOUISIANA  
LOUISIANA HIGHWAY COMMISSION

PLAN AND PROFILE OF PROPOSED  
STATE HIGHWAY

**GALION OVERPASS**

STATE ROUTE NO 14 OVER  
MO. PAC. RAILROAD  
MONROE-ARK. STATE LINE HWY  
MOREHOUSE PARISH

U.S. WORKS PROGRAM GRADE CROSSING PROJECT NO W.P.G.H. 106-B

STATE PROJECT NO 4351 → 16-05-07

4351  
016-05-07

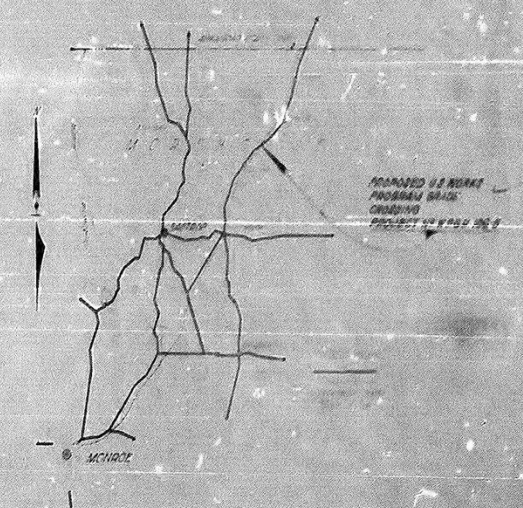
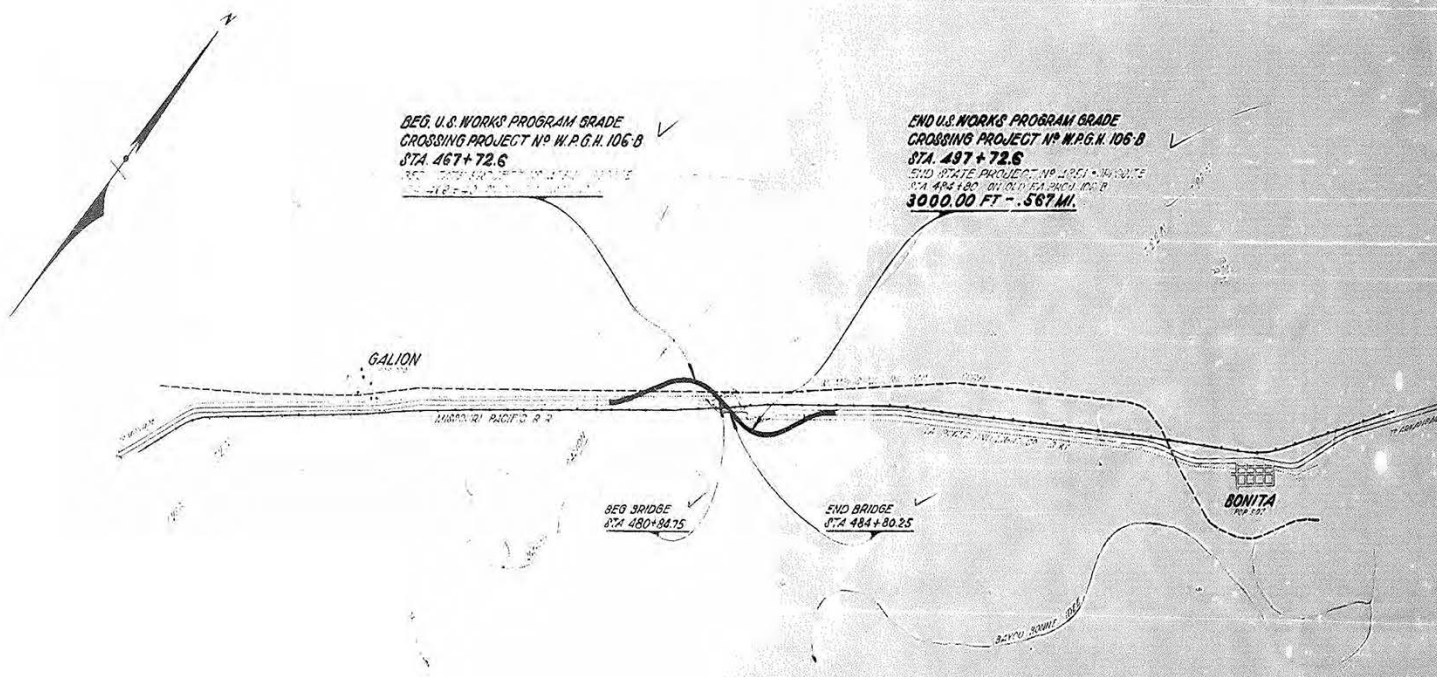


Table with columns: SUBMITTED BY, PLOTTED, CHECKED, DATE.

NOTE BOOK  
NO 18-524

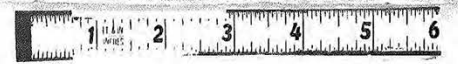


CONVENTIONAL SIGNS

Table listing various highway signs and their corresponding symbols.

LAYOUT MAP

SCALE 1 INCH = 2640 FEET



Summary table for U.S. WORKS PROGRAM GRADE CROSSING PROJECT NO W.P.G.H. 106-B. Includes columns for STA TO STA, ROADWAY, BRIDGE, TOTAL FEET, TOTAL MILES, and SPONSOR LENGTH.

APPROVED: [Signature]  
APPROVED: [Signature]

SCHEDULE OF REVISIONS table with columns: TAB, IN, DATE.

RECOMMENDED FOR APPROVAL  
RECOMMENDED FOR APPROVAL  
APPROVED

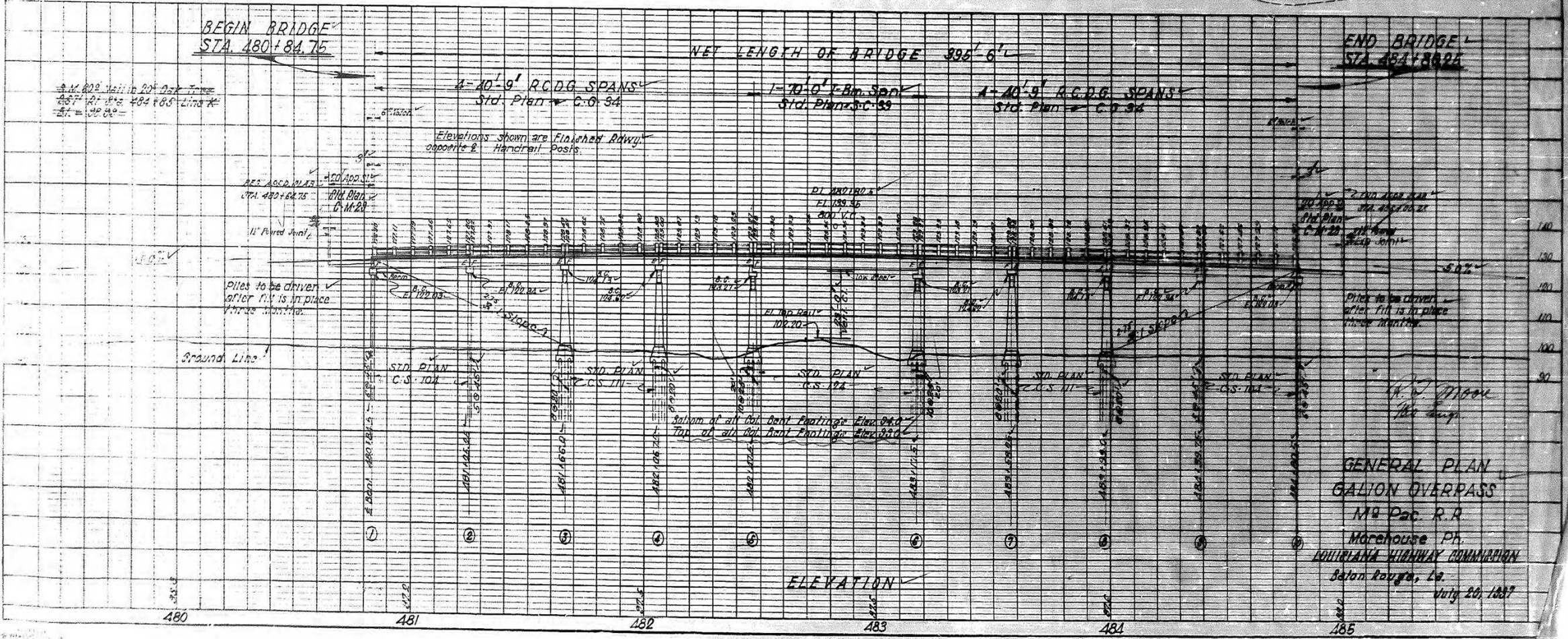
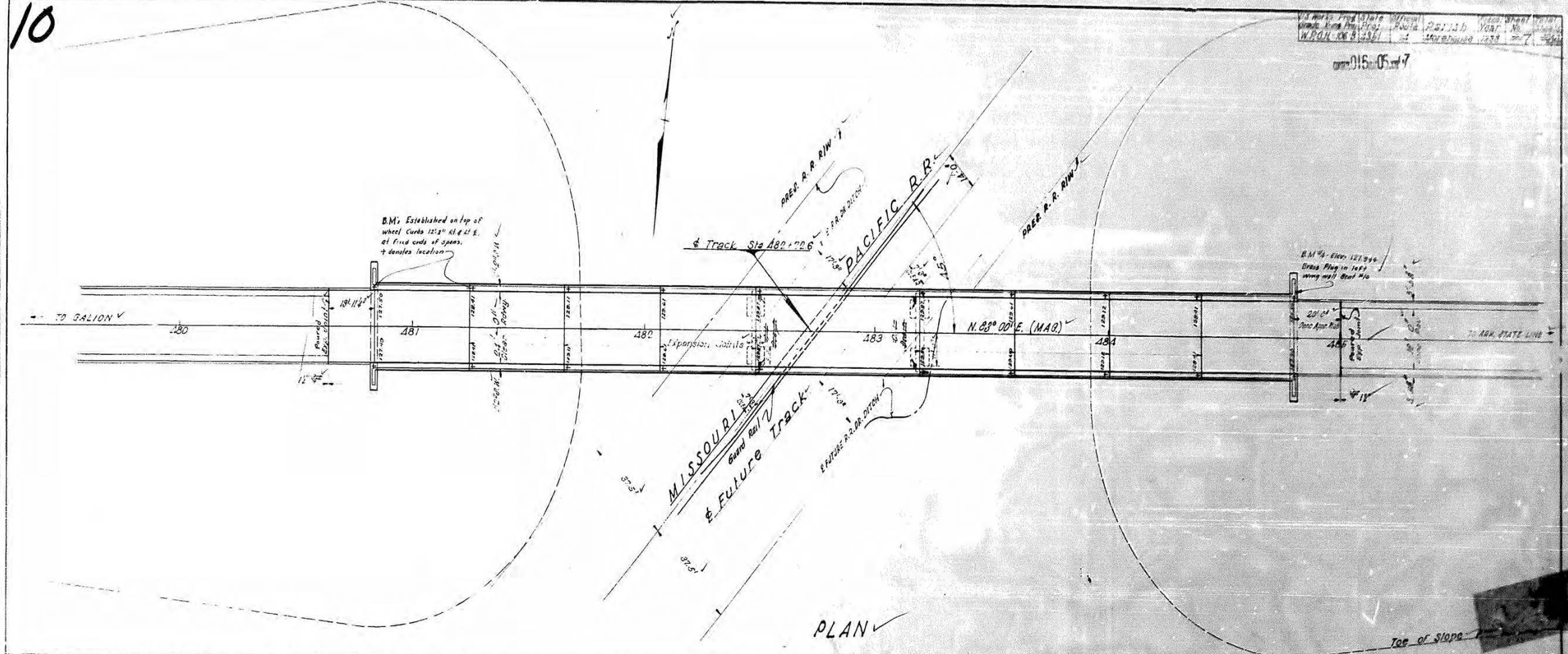






10

DATE: July 20, 1887  
DRAWN BY: J. W. MASON  
CHECKED BY: J. W. MASON  
SCALE: AS SHOWN



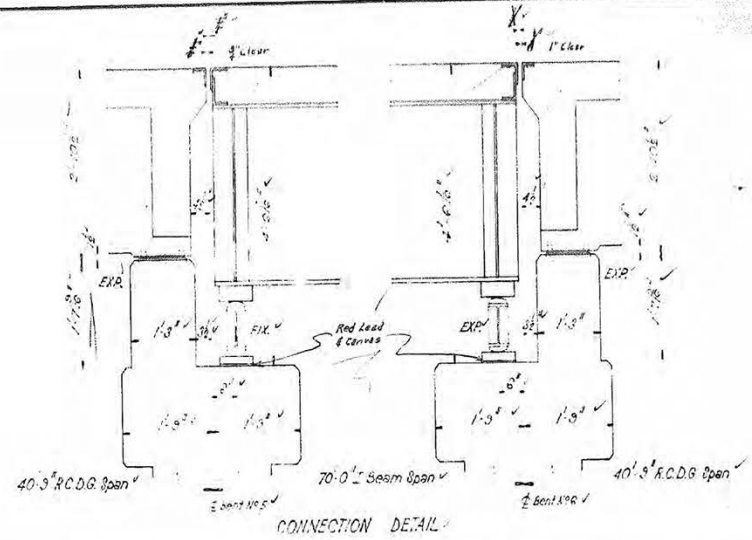
AS BUILT PLANS







12



U.S. Works Program	State	Official Route	Fiscal Year	Parish	Project
Grade Crossing Project	LA	106-B	1957	Morehouse	

016-05-07

ITEM	4	5	13	14	14.10	APC	36.77	10.19 A	32.20 A	30.97 B	32.09 B	18	20	61	66	70	70 B	20 A	20 B	33 L	34	116	130	51	48 B	
	Shokey Excavation Cu. Yds.	Remov. Excavation Cu. Yds.	Rolling Machine	Structural Steel (Kilo Pounds)	R. W. Excavation No. Yds.	Guard Rail Lin. Ft.	Concrete Pavement Sq. Yds.	Asphalt Filler Tons	Paint (1/2\"/>																	
WEST APPROACH		55557	10-34 13-12		12	126.55	2586.36	0.0	0.0	10.242	0.0	12852		20.20	1.72	2755							1178.50		70	
BENTS 1, 2, 9 & 10														1.66	28.82	5010			890	2	16\"/>					
BENTS 3 TO 5, 6 TO 8														235.52	320.80			1040		1	14\"/>					
SPANS 1 TO 4, 6 TO 9														404.06	11834	6832							12224		70	
SPAN 5														58.23	10385	5788	5351									
BLAST PLATES																8724										
EAST APPROACH	22	50000	10-116	16-25	12	126.55	2586.36	0.0	0.0	10.242	0.0	12852	2	20.35	5.41	2826							1141.70		40	24
TOTAL BRIDGE														463.95	244.35	16702.51	21345	5351	1040	3	4		12225		80	
TOTAL APPROACH	22	100107	21-130	16-25	24	2527	5152.10	0.0	0.0	1.317	20323	0.0	2566	40.53	7.13	5581							2321.20		80	24
GRAND TOTAL	22	100107	21-130	16-25	24	2527	5152.10	0.0	0.0	1.317	20323	0.0	2566	504.48	271.47	172606	21345	5351	1040	3	4		2321.20		80	24

NOTE: Pile Lengths Shown Are For Estimating Purposes Only.  
\* Non Participating Item.

ITEM	DESCRIPTION	REMARKS
1	...	...
2	...	...
3	...	...
4	...	...
5	...	...
6	...	...
7	...	...
8	...	...
9	...	...
10	...	...
11	...	...
12	...	...
13	...	...
14	...	...
15	...	...
16	...	...
17	...	...
18	...	...
19	...	...
20	...	...
21	...	...
22	...	...
23	...	...
24	...	...
25	...	...
26	...	...
27	...	...
28	...	...
29	...	...
30	...	...
31	...	...
32	...	...
33	...	...
34	...	...
35	...	...
36	...	...
37	...	...
38	...	...
39	...	...
40	...	...
41	...	...
42	...	...
43	...	...
44	...	...
45	...	...
46	...	...
47	...	...
48	...	...
49	...	...
50	...	...

U.S. WORKS PROGRAM  
GRADE CROSSING PROJECT N° WPGH 106-B

Required lettering for Project Sign - See Std. Plan P-3-B - Two signs required.

SUMMARY SHEET  
GALION OVERPASS  
OVER  
MISSOURI PACIFIC R.R.

LOUISIANA HIGHWAY COMMISSION  
BATON ROUGE, LA. July 1957

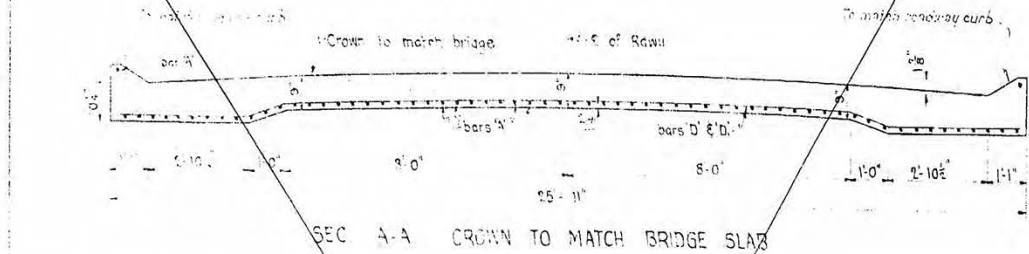
DESIGNED	TRACED
CHECKED	CHECKED
IN CHARGE OF	



AS BUILT PLANS



19

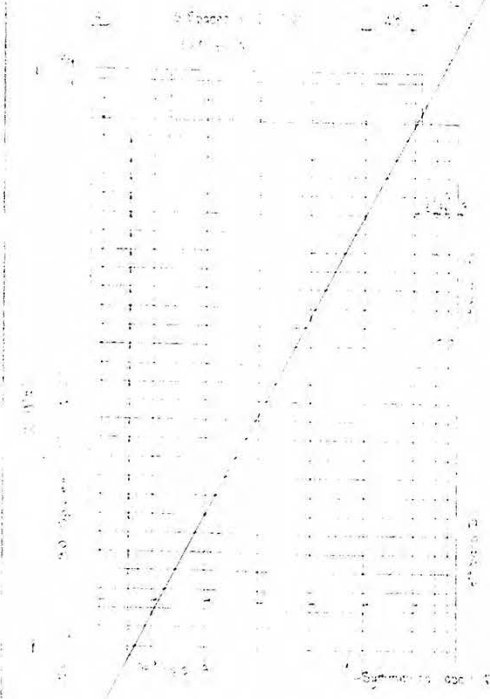


Some Design of Dowel Bars to be shown in detail. If possible, show the connection to the concrete.

1/2" Dowel Bars. Embed in concrete. Equal spacing. Expansion tubes.

1/2" Dowel Bars. Embed in concrete. Equal spacing. Expansion tubes.

SECTION ON C

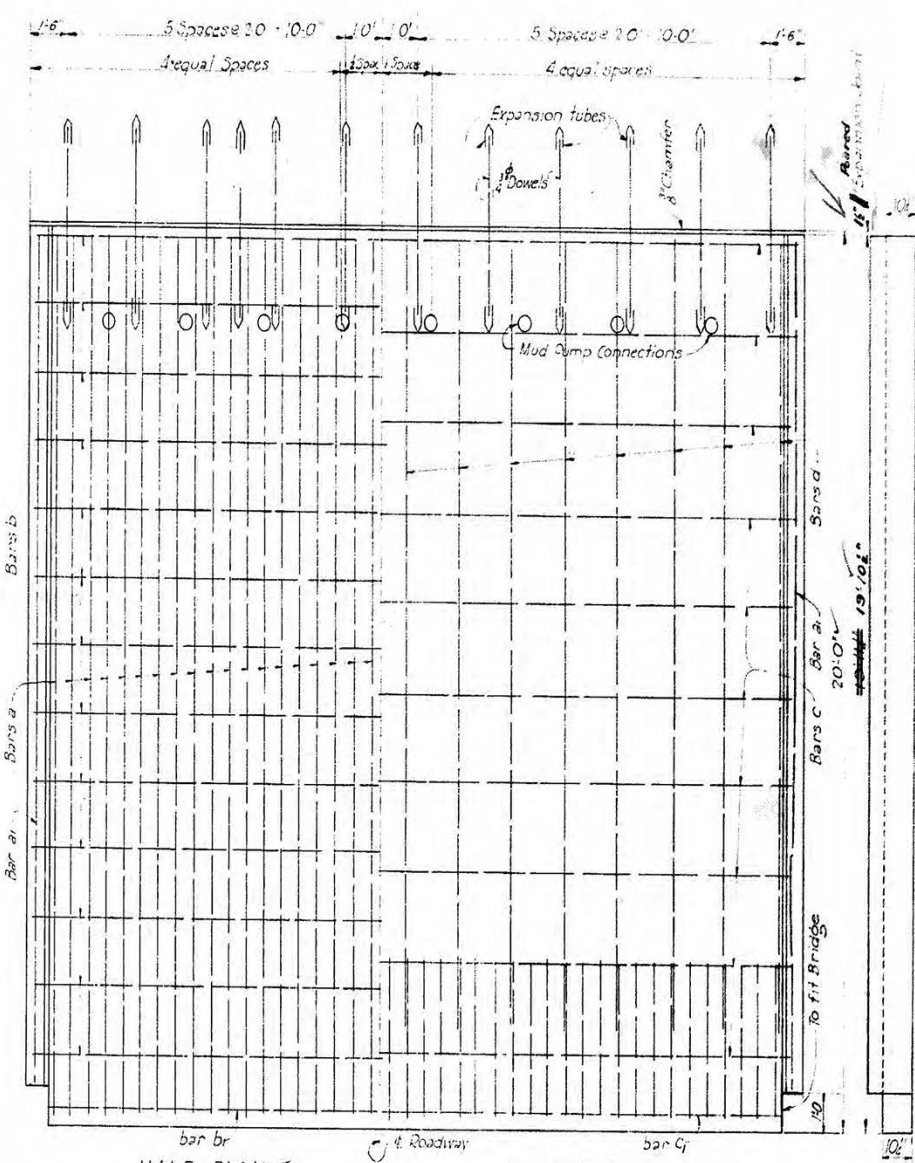


HALF PLAN OF SLAB

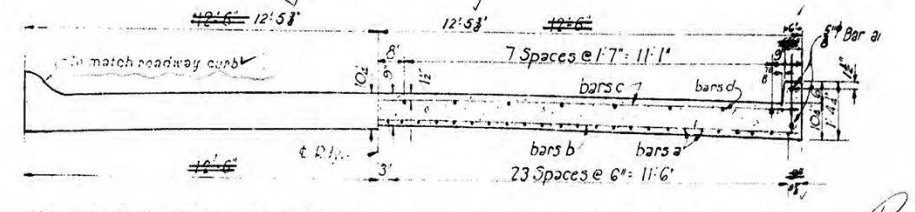
BILL OF MATERIAL FOR ONE SLAB

Mark	Size	No	Unit Length	Total Length
A	5/8"	56	10'-0"	560'-0"
B	5/8"	8	9'-0"	72'-0"
Total 5/8" bars = 632'-0"				Wt = 658 Lbs.
D	5/8"	7	153'-4"	1073'-4"
E	5/8"	2	23'-0"	46'-0"
Total 5/8" bars = 639'-0"				Wt = 100 Lbs.
Dowels	5/8"	10	4'-0"	40'-0"
Total 5/8" bars = 40'-0"				Wt = 40 Lbs.
Total Reinforcing Steel = 809 Lbs.				
Class A-A Concrete = 8.13 Cu. Yds.				

Reinforcing steel shall govern...  
 Expansion tubes shall be made for expansion tubes...  
 Dowels to be included in price bid for Reinforcing Steel...  
 The 5/8" Rebar shall be classed...  
 and shall be paid for as such.



HALF PLAN SHOWING REINFORCEMENT IN TOP OF SLAB



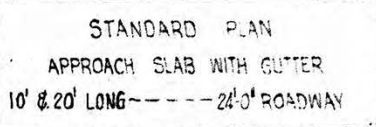
HALF END ELEVATION OF SLAB AT ROADWAY SLAB

Mark	Size	SPACING	No	UNIT LENGTH	TOTAL LENGTH	WEIGHT
* Bars	5/8"	2'-0"	12	4'-0"	48'-0"	72#
a	5/8"	6'	48	23'-8"	1136'-0"	1185#
b	5/8"	12" in Curb	4	18'-6"	74'-0"	77#
c	5/8"	1'-6"	13	24'-9"	323'-9"	337#
h	5/8"	1'	1	23'-6"	23'-6"	24#
c	5/8"	2'-0"	10	24'-9"	247'-6"	255#
g	5/8"	1'	1	23'-6"	23'-6"	24#
d	5/8"	See Sect 16	1	17'-6"	17'-6"	18#
TOTAL 5/8" BARS						762#
TOTAL REINFORCING BARS						2086#
8 MUD PUMP CONNECTIONS						43#
TOTAL REINFORCEMENT						2144#
CLASS A-A Concrete						15.73 Cu. Yds.

\* Dowels to be included in price bid per sq. yd. of pavement when built in conjunction with concrete pavement.

R. J. Moon  
 P.E. Eng.

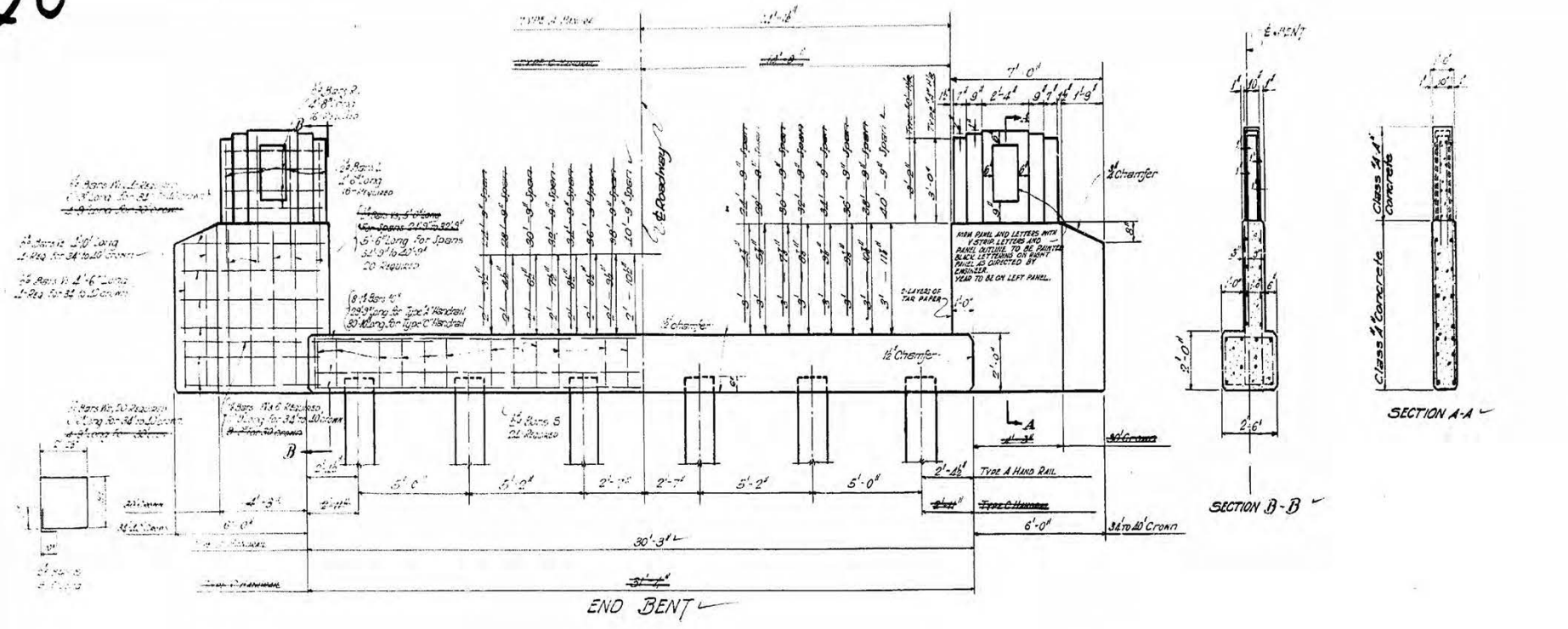
8 Required DETAILS OF MUDPUMP CONNECTION ON



LOUISIANA HIGHWAY COMMISSION			
BATON ROUGE, LA. March 1933			
Project	Quantity	Unit	Amount
10-30-33	Quantity	Unit	Amount
10-30-33	Quantity	Unit	Amount
10-30-33	Quantity	Unit	Amount







**ESTIMATED QUANTITIES**

TOTAL SPAN FEET	END BENT 34' TO 40' CROWN		INTERMEDIATE BENT		PILE LOADING
	CONCRETE	REINFORCING STEEL	CONCRETE	REINFORCING STEEL	
24'-0"	0.83	0.06	1616	6.37	308
26'-0"	0.83	0.11	1616	6.37	308
28'-0"	0.83	0.17	1616	6.37	308
30'-0"	0.83	0.24	1616	6.37	308
32'-0"	0.83	0.32	1624	6.37	308
34'-0"	0.83	0.40	1624	6.37	308
36'-0"	0.83	0.49	1624	6.37	308
40'-0"	0.83	0.77	1624	6.37	308

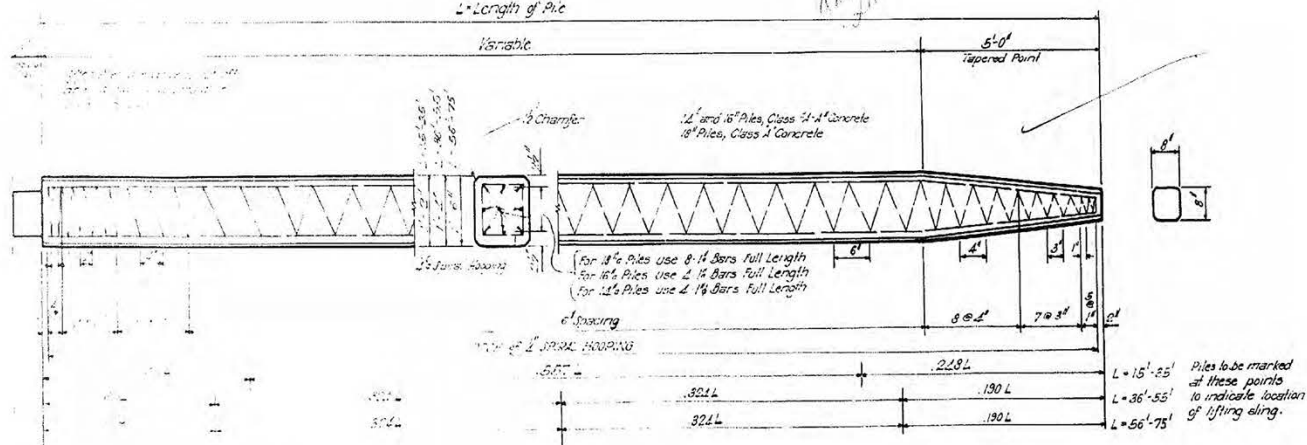
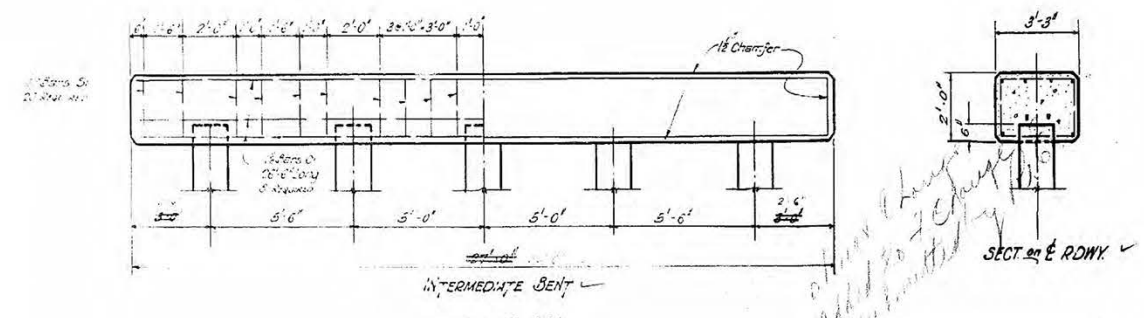
QUANTITIES TO BE ADDED TO END BENT FOR USE WITH TYPE 'C' HANDRAIL

Class A Concrete 20 cu yds  
Reinforcing Steel 29 pounds  
Class A Concrete 05 cu yds

QUANTITIES TO BE DEDUCTED FROM END BENT FOR USE WITH 30' CROWN

CLASS A CONCRETE  
24' Span 66 cu  
26' Span 61 cu  
28' Span 57 cu  
30' Span 53 cu  
32' Span 50 cu  
34' Span 47 cu  
36' Span 44 cu  
40' Span 40 cu

REINFORCING STEEL  
All Spans 107 pounds



**GENERAL NOTES**

Louisiana Highway Commission Specifications to govern Concrete to be Class 'A' in cap and riser. Concrete to be class 'A-A' in Handrail.

All dimensions to Reinforcing Steel are to bar ctrs. No direct payment will be made for Reinforcing Steel in concrete piling.

The price bid per lin. ft. of piling shall include the cost of furnishing and placing all material for same.

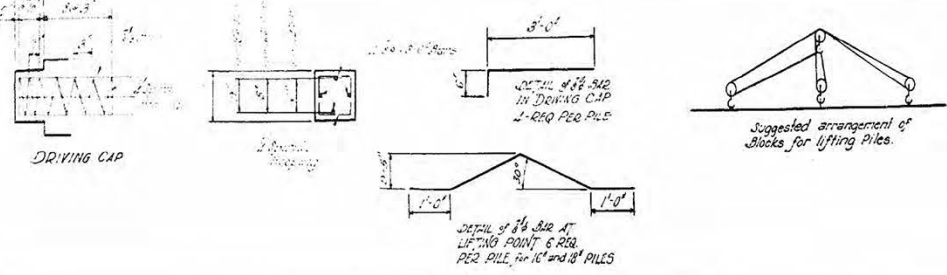
All exposed surfaces to have a "Rubbed Finish".

All exposed corners to have a chamfer unless noted.

For Year Plate see Standard Plan C.M. 37.

For Lettering see Standard Plan C.M. 35.

Quantities shown are for 145 Piles deducted.



**APPROXIMATE QUANTITIES FOR PILES**

PILE LENGTHS	DRIVING CAP TOTAL		VARIABLE PART PER LIN. FT.		TAPERED POINT TOTAL	
	CONCRETE Cu. Yds.	STEEL POUNDS	CONCRETE Cu. Yds.	STEEL POUNDS	CONCRETE Cu. Yds.	STEEL POUNDS
15' - 35'	.031	36	.051	12	.170	65
36' - 55'	.031	38	.066	15	.202	166
56' - 75'	.031	39	.083	29	.250	236

\*INCLUDES 3/8\"/>

To be used with Standard Plan C.G. 31 and 35 and C.M. 103

**STANDARD PLAN**

**REINFORCED CONCRETE PILE BENTS**

**24'-0" ROADWAY**

**30'-0" TO 40'-0" ROADWAY CROWN**

**3:1 SIDE SLOPES**

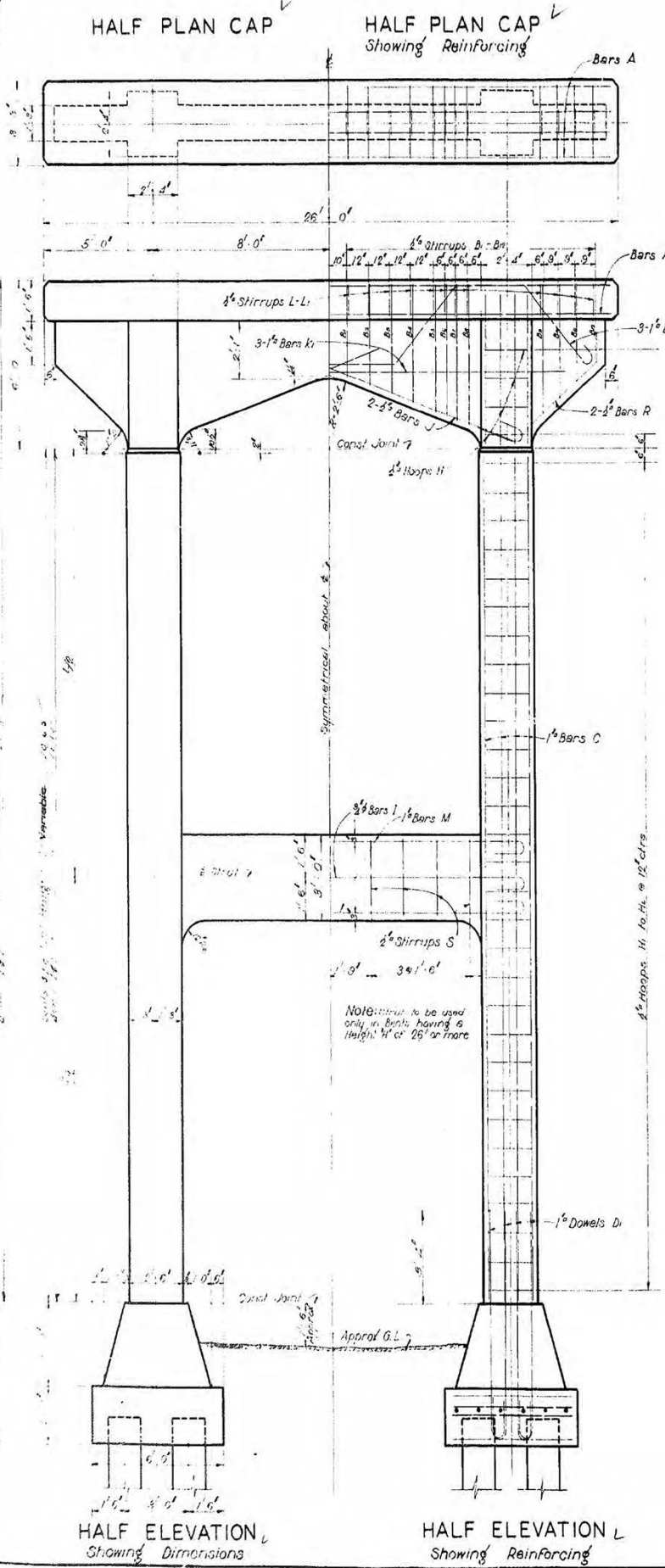
LOUISIANA HIGHWAY COMMISSION  
BATON ROUGE, LA. DECEMBER 1954

DESIGNED BY: [Signature]  
CHECKED BY: [Signature]  
IN CHARGE OF: [Signature]

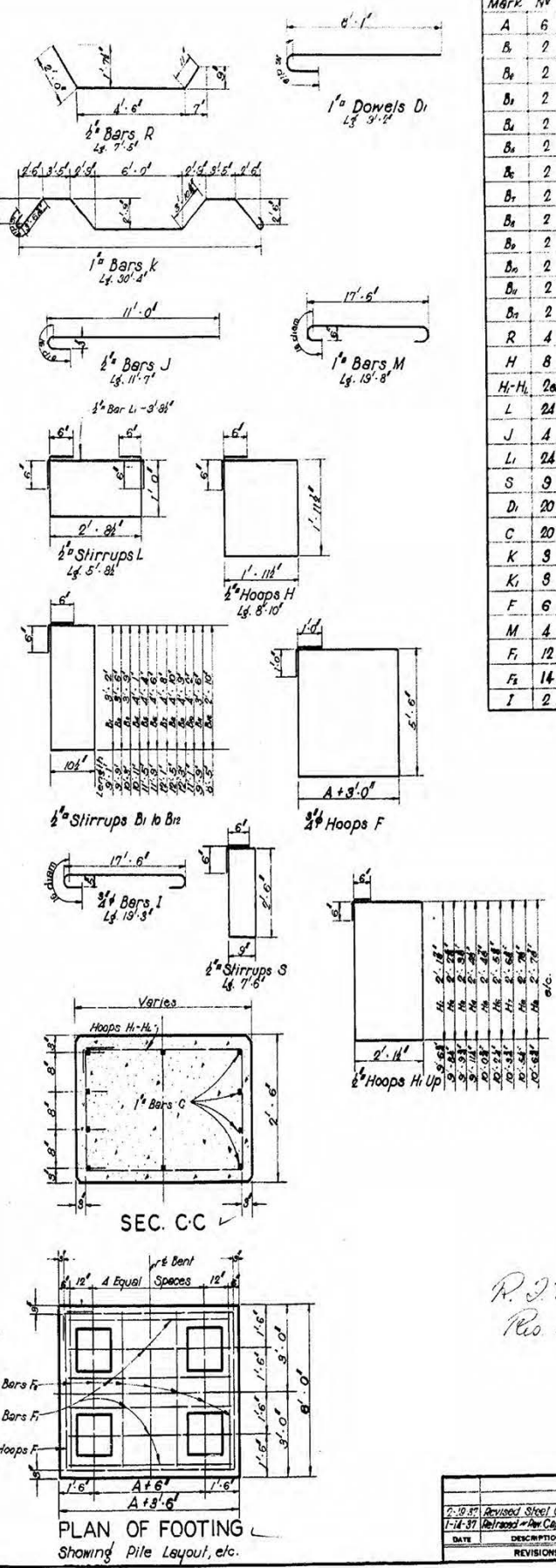
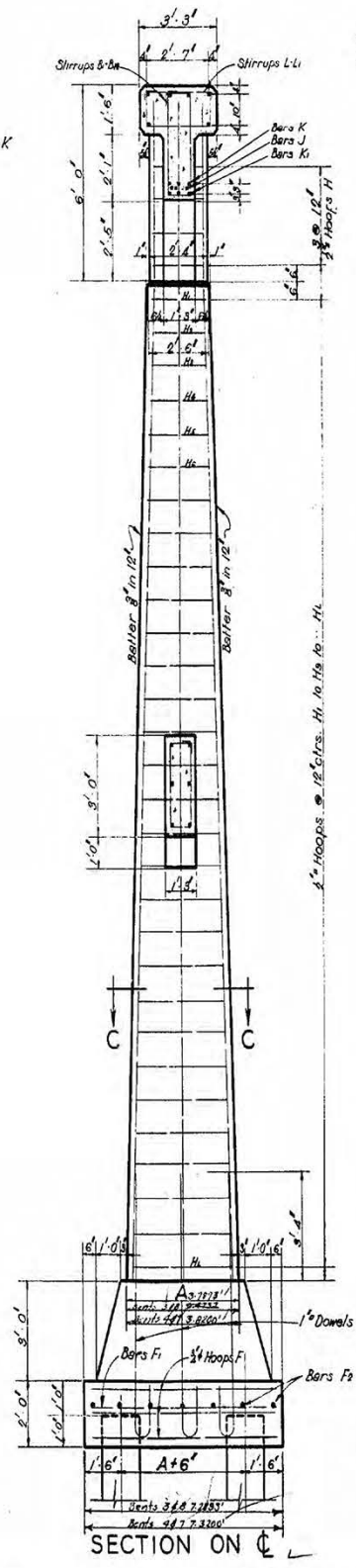




21



**General Notes**  
 Louisiana Highway Commission Specifications to govern. Concrete to be Class A.  
 All dimensions to reinforcing steel are to bar centers. Bar splices are allowed only where shown. All exposed corners to have 1/2" chamfer unless noted.  
 All exposed concrete to have "Rubbed Finish".



Mark No	Size	Length	Location
A	6	26'-6"	Long in Cap
B	2	3'-1"	Stirrups in Cap
B <sub>1</sub>	2	3'-3"	
B <sub>2</sub>	2	10'-3"	
B <sub>3</sub>	2	10'-11"	
B <sub>4</sub>	2	11'-5"	
B <sub>5</sub>	2	11'-8"	
B <sub>6</sub>	2	12'-1"	
B <sub>7</sub>	2	12'-3"	
B <sub>8</sub>	2	12'-3"	
B <sub>9</sub>	2	11'-1"	
B <sub>10</sub>	2	9'-8"	
B <sub>11</sub>	2	4'-5"	
R	4	7'-5"	Cap Overhang
H	8	8'-10"	Columns
H-H <sub>1</sub>	2ea	Varies	
L	24	5'-8 1/2"	Cap
J	4	11'-7"	
L <sub>1</sub>	24	3'-8 1/2"	
S	9	7'-6"	Strut
D	20	9'-2"	Column to footing
C	20	H-6"	Columns
K	8	30'-4"	Cap
K <sub>1</sub>	8	21'-6"	
F	6	18'-0" + 2A	Footing
M	4	18'-8"	Strut
F <sub>1</sub>	12	A+3'-0"	Footing
F <sub>2</sub>	14	5'-6"	
I	2	19'-3"	Strut

H Bent Ht	A	Class A Concrete Cu Yds	Reinforcing Steel Lbs
40'-0"	4'-7 1/2"	45.34	6067
38'-0"	4'-6"	44.03	5850
36'-0"	4'-4 1/2"	42.16	5634
34'-0"	4'-3"	40.34	5509
32'-0"	4'-1 1/2"	38.57	5325
30'-0"	4'-0"	36.84	5141
28'-0"	3'-10"	35.16	4959
26'-0"	3'-8"	33.53	4777
24'-0"	3'-7 1/2"	32.05	4712
22'-0"	3'-6"	29.50	4033
20'-0"	3'-4 1/2"	27.01	3854
18'-0"	3'-3"	25.56	3676
16'-0"	3'-1 1/2"	24.16	3498
14'-0"	3'-0"	22.80	3322
12'-0"	2'-10"	21.49	3145
10'-0"	2'-9"	20.23	2971

Concrete Quantities shown are for 14" Piles deduct for 16" Piles, deduct 0.18 cu yds from above Quan for 18" Piles.  
 When Timber Piles are used, add 40 cu yds to quantities shown then subtract actual cu yds occupied by piles used.

R. J. Moore  
 Res. Eng.

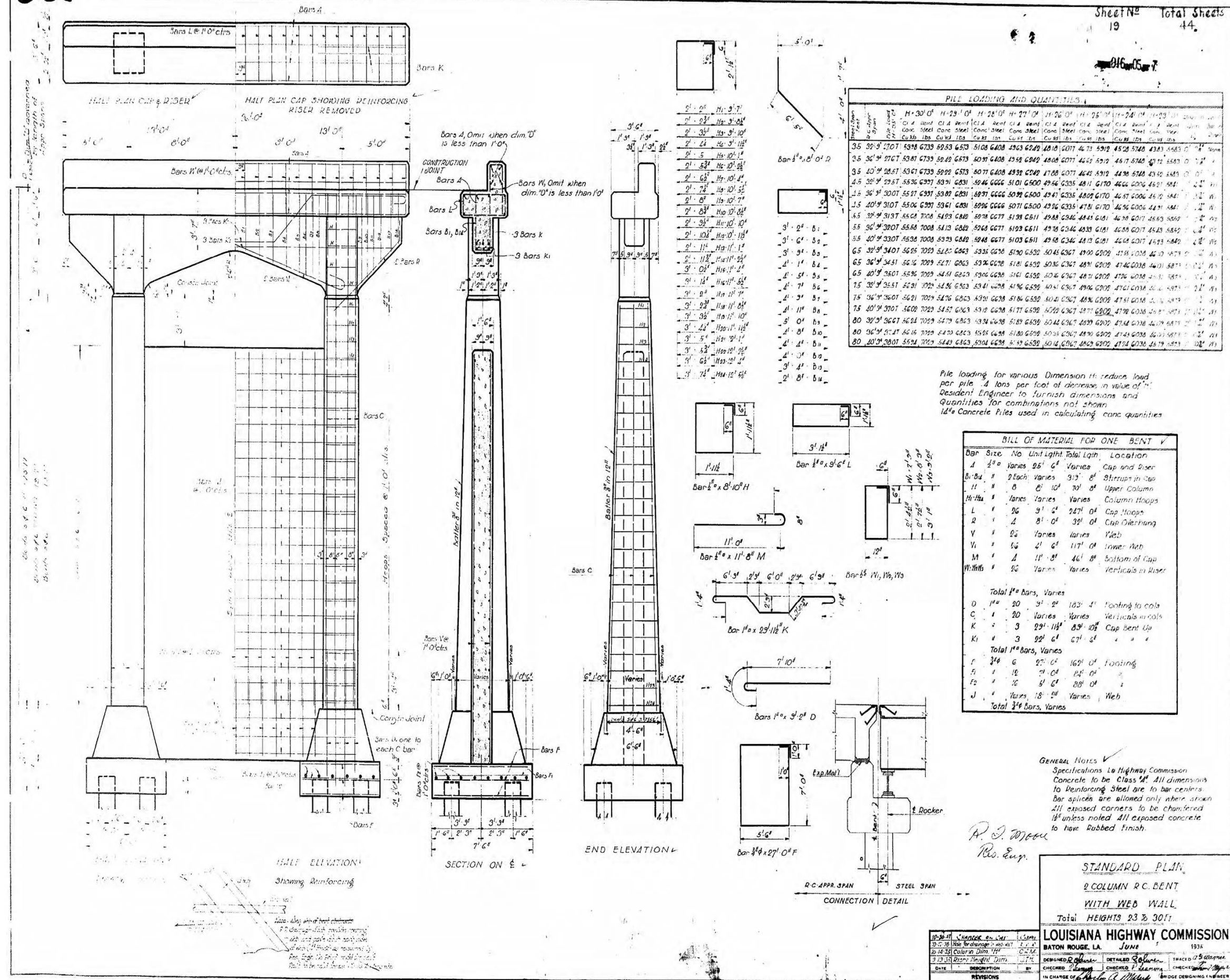
**STANDARD PLAN**  
 REIN. CONCRETE COL BENT  
 FOR STD. R.C. DECK GIRDER SPANS  
 OF 32 TO 40 FT - 24' RDWY

LOUISIANA HIGHWAY COMMISSION  
 BATON ROUGE, LA. May 1951

DATE	DESCRIPTION	BY	CHECKED	BY
7-19-51	Revised Steel Quant.	P.L.		
1-14-57	Revised Rev Cap Quant.	P.L.		







PILE LOADING AND QUANTITIES

Dimension	11'-0" H	11'-3" H	11'-6" H	11'-9" H	12'-0" H	12'-3" H	12'-6" H	12'-9" H	13'-0" H	13'-3" H	13'-6" H	13'-9" H	14'-0" H	14'-3" H	14'-6" H	14'-9" H	15'-0" H
3.5	2707	5398	6733	8253	6573	5108	6408	4932	6242	4810	6077	4673	5912	4528	5748	4383	5583
4.5	2957	5536	6977	8391	6831	5246	6501	4956	6335	4811	6170	4766	6006	4621	5841	4476	5676
5.5	3207	5537	6997	8389	6831	5246	6501	4956	6335	4811	6170	4766	6006	4621	5841	4476	5676
6.5	3457	5538	7008	8413	6842	5268	6511	4978	6346	4833	6181	4788	6028	4643	5863	4518	5718
7.5	3707	5539	7029	8437	6873	5290	6514	4999	6359	4855	6194	4809	6049	4664	5884	4539	5739
8.5	3957	5540	7050	8461	6904	5312	6517	5020	6372	4876	6203	4830	6062	4689	5909	4564	5759
9.5	4207	5541	7071	8485	6935	5334	6520	5041	6385	4897	6216	4851	6075	4718	5928	4589	5779
10.5	4457	5542	7092	8509	6966	5356	6523	5062	6398	4918	6229	4872	6088	4739	5938	4610	5789
11.5	4707	5543	7113	8533	6997	5378	6526	5083	6411	4939	6242	4893	6101	4760	5947	4631	5799
12.5	4957	5544	7134	8557	7028	5400	6529	5104	6424	4960	6255	4914	6114	4781	5956	4652	5809
13.5	5207	5545	7155	8581	7059	5422	6532	5125	6437	4981	6268	4935	6127	4802	5965	4673	5819
14.5	5457	5546	7176	8605	7090	5444	6535	5146	6450	5002	6281	4956	6140	4823	5974	4694	5829
15.5	5707	5547	7197	8629	7121	5466	6538	5167	6463	5023	6294	4977	6153	4844	5983	4715	5839
16.5	5957	5548	7218	8653	7152	5488	6541	5188	6476	5044	6307	4998	6166	4865	5992	4736	5849
17.5	6207	5549	7239	8677	7183	5510	6544	5209	6489	5065	6320	5019	6179	4886	6001	4757	5859
18.5	6457	5550	7260	8701	7214	5532	6547	5230	6502	5086	6333	5040	6192	4907	6010	4778	5869
19.5	6707	5551	7281	8725	7245	5554	6550	5251	6515	5107	6346	5061	6205	4928	6019	4799	5879
20.5	6957	5552	7302	8749	7276	5576	6553	5272	6528	5128	6359	5082	6218	4949	6028	4820	5889
21.5	7207	5553	7323	8773	7307	5598	6556	5293	6541	5149	6372	5103	6231	4970	6037	4841	5899
22.5	7457	5554	7344	8797	7338	5620	6559	5314	6554	5170	6385	5124	6244	4991	6046	4862	5909
23.5	7707	5555	7365	8821	7369	5642	6562	5335	6567	5191	6398	5145	6257	5012	6055	4883	5919
24.5	7957	5556	7386	8845	7400	5664	6565	5356	6580	5212	6411	5166	6270	5033	6064	4904	5929
25.5	8207	5557	7407	8869	7431	5686	6568	5377	6593	5233	6424	5187	6283	5054	6073	4925	5939
26.5	8457	5558	7428	8893	7462	5708	6571	5398	6606	5254	6437	5208	6296	5075	6082	4946	5949
27.5	8707	5559	7449	8917	7493	5730	6574	5419	6619	5275	6450	5229	6309	5096	6091	4967	5959
28.5	8957	5560	7470	8941	7524	5752	6577	5440	6632	5296	6463	5250	6322	5117	6100	4988	5969
29.5	9207	5561	7491	8965	7555	5774	6580	5461	6645	5317	6476	5271	6335	5138	6109	5009	5979
30.5	9457	5562	7512	8989	7586	5796	6583	5482	6658	5338	6489	5292	6348	5159	6118	5030	5989
31.5	9707	5563	7533	9013	7617	5818	6586	5503	6671	5359	6502	5313	6361	5180	6127	5051	5999
32.5	9957	5564	7554	9037	7648	5840	6589	5524	6684	5380	6515	5334	6374	5201	6136	5072	6009
33.5	10207	5565	7575	9061	7679	5862	6592	5545	6697	5401	6528	5355	6387	5222	6145	5093	6019
34.5	10457	5566	7596	9085	7710	5884	6595	5566	6710	5422	6541	5376	6400	5243	6154	5114	6029
35.5	10707	5567	7617	9109	7741	5906	6598	5587	6723	5443	6554	5397	6413	5264	6163	5135	6039

Pile loading for various Dimension H; reduce load per pile .4 tons per foot of decrease in value of H. Resident Engineer to furnish dimensions and quantities for combinations not shown. 14" Concrete Piles used in calculating cone quantities.

BILL OF MATERIAL FOR ONE BENT V

Bar Size	No	Unit	Light	Total Lght	Location
A	2	Varies	25'	50'	Cap and Riser
B	8	Each	Varies	315'	Stirrups in Cap
H	8	Each	10'	80'	Upper Column
H	8	Varies	Varies	Varies	Column Hoops
L	2	Each	3'	6'	Cap Hoops
R	2	Each	8'	16'	Cap Overhang
V	2	Varies	Varies	Varies	Web
V	2	Each	2'	4'	Inner Web
M	2	Each	11'	22'	Bottom of Cap
M	2	Each	Varies	Varies	Verticals in Riser
Total # of Bars, Varies					
D	20	Each	3'	60'	Footings to cols
C	20	Varies	Varies	Varies	Verticals in cols
K	3	Each	11'	33'	Cap Bent Up
K	3	Each	9'	27'	" " "
Total # of Bars, Varies					
F	6	Each	27'	162'	Footings
F	12	Each	2'	24'	"
F	12	Each	4'	48'	"
J	18	Each	2'	36'	Web
Total # of Bars, Varies					

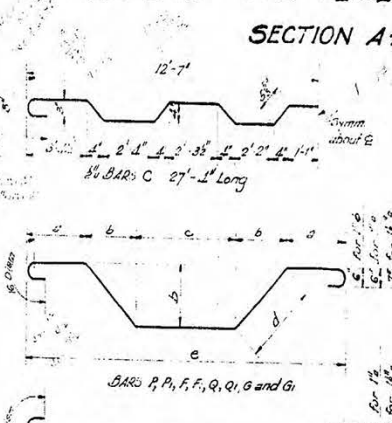
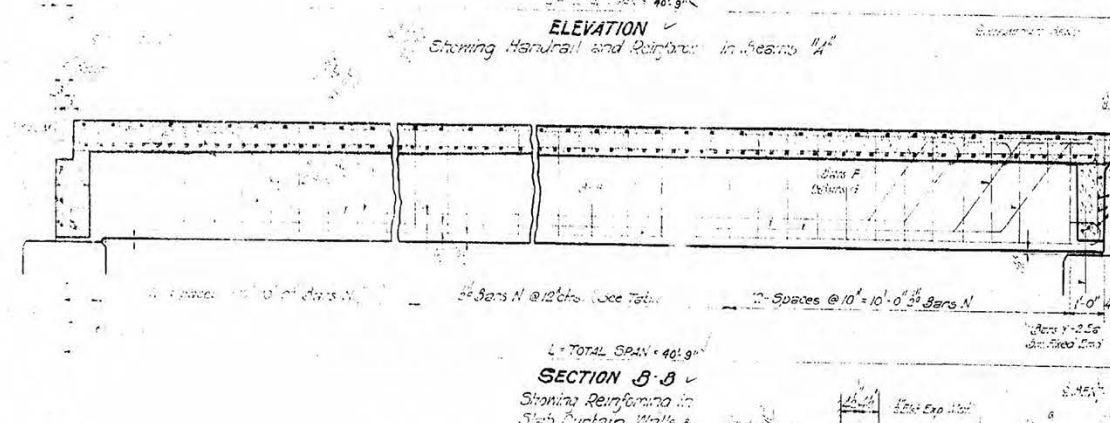
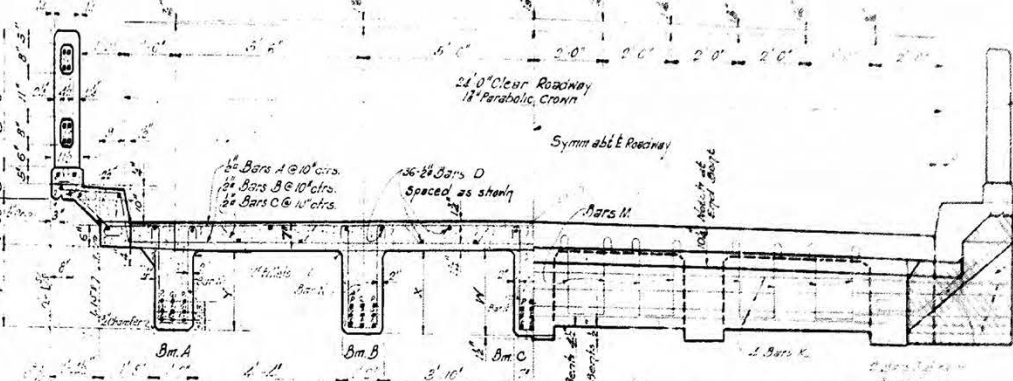
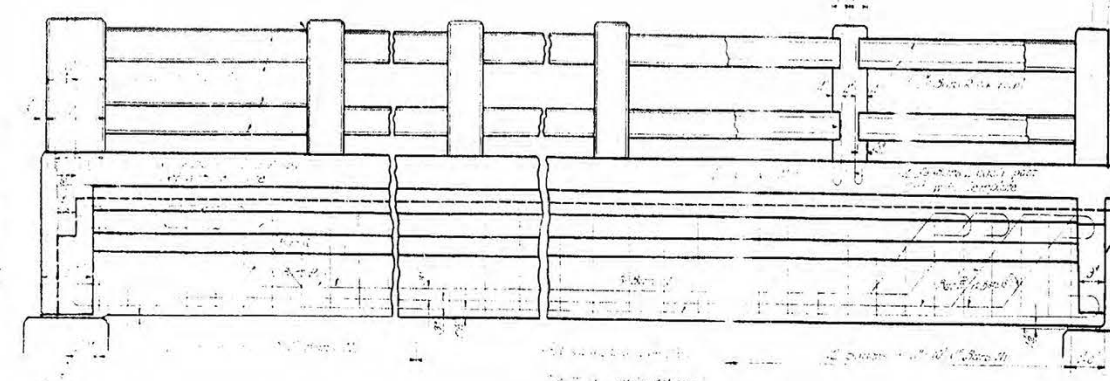
GENERAL NOTES  
 Specifications La Highway Commission  
 Concrete to be Class 40. All dimensions to Reinforcing Steel are to bar centers. Bar splices are allowed only where shown. All exposed corners to be chamfered 1/8" unless noted. All exposed concrete to have Rubbed Finish.

R. J. McMan  
 Res. Eng.

STANDARD PLAN  
 R.C. COLUMN R.C. BENT  
 WITH WEB WALL  
 Total HEIGHTS 23 TO 30 FT  
 LOUISIANA HIGHWAY COMMISSION  
 BATON ROUGE, LA. June 1935  
 DESIGNED BY [Signature] CHECKED BY [Signature] TRACED BY [Signature]  
 IN CHARGE OF [Signature] BRIDGE DESIGNING ENGINEER





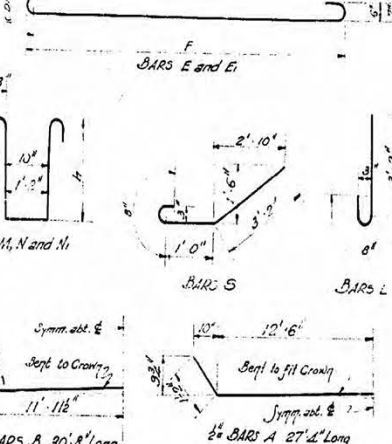
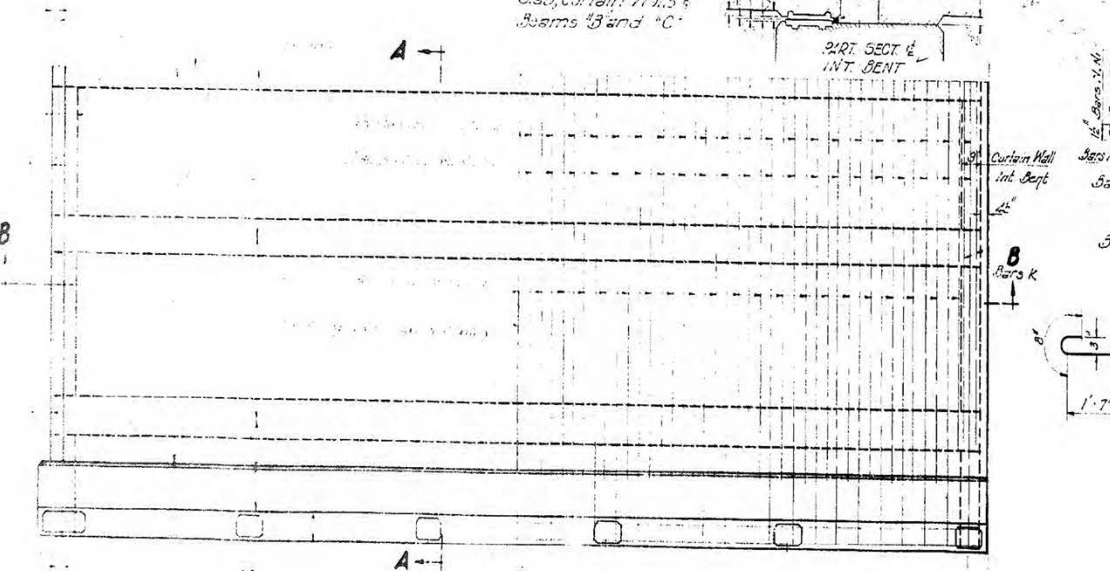


**BAR BENDING TABLE**

Bar	Length	Bend 1	Bend 2	Bend 3	Bend 4	Bend 5	Bend 6	Bend 7	Bend 8	Bend 9	Bend 10	Bend 11	Bend 12	Bend 13	Bend 14	Bend 15	Bend 16	Bend 17	Bend 18	Bend 19	Bend 20	
A	27'-0"																					
B	30'-0"																					
C	27'-0"																					
D	30'-0"																					
E	30'-0"																					
F	27'-0"																					
G	27'-0"																					
H	27'-0"																					
I	27'-0"																					
J	27'-0"																					
K	30'-0"																					
L	27'-0"																					
M	27'-0"																					
N	40'-0"																					
O	40'-0"																					
P	27'-0"																					
Q	27'-0"																					
R	27'-0"																					

**BILL OF REINFORCING STEEL**

Bar and Location	Quantity	Weight	Volume
A	11.610	2169	118.55
B	16.96	3091	123.12
C	50.06	1391	2704
D	58.73	2505	50.12
E	31.67	14923	14830



**GENERAL NOTES:**  
 Specifications Louisiana Highway Commission  
 Live Load: H-15. Dead Load Calculated in % of concrete. Concrete to be class "A" all dimensions to Reinforcing Steel are in bar centers. Bar splices are allowed only where shown. All exposed corners to have 2" chamfer unless noted. Slab cuts and beam stems to be placed in one continuous operation. Structural Steel, Brackets and C.I. plates to be paid for as Structural Steel. Expansion Material to be included in unit price for Concrete. All exposed surfaces, except foundations, to have a "Rubbed Finish".

**DIMENSIONS and QUANTITIES**

Total Span Feet	Dimensions W X Y	Strip Spacing	Quantity	Weight	Volume
32'-0"	2'-0" x 1'-11 1/2" x 1'-10"	12" spaces @ 10'	11.610	2169	118.55
36'-0"	2'-0" x 1'-11 1/2" x 1'-10"	12" spaces @ 10'	16.96	3091	123.12
38'-0"	2'-0" x 1'-11 1/2" x 1'-10"	12" spaces @ 10'	50.06	1391	2704
40'-0"	2'-0" x 2'-18" x 2'-0"	12" spaces @ 10'	58.73	2505	50.12
		12" spaces @ 10'	31.67	14923	14830

**MATERIAL FOR EXPANSION JOINTS**

ITEM	Quantity	Weight
Grout	148	296
U.S. Steel	538	538
Cast Iron	205	410
Steel	891	1224

**HANDRAIL SPACING**

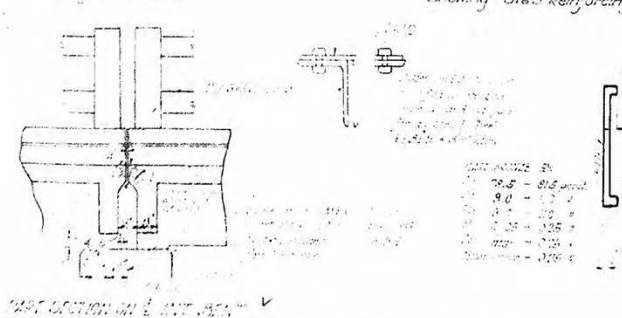
SPAN LENGTH	SPACES	SPACING
20'-0"	5	5' 3" 3/4
20'-0"	5	5' 3" 3/4

R.D. Moore  
 Res. Engr.

**STANDARD PLAN**  
 Reinforced Concrete Deck Girder Spans  
 21'-0" CLEAR ROADWAY  
 31'-9" to 20'-3" Spans  
 LOUISIANA HIGHWAY COMMISSION  
 BATON ROUGE, LA.

QUARTER PLAN  
 Showing Dimensions

QUARTER PLAN  
 Showing Slab Reinforcing



5-Rs. 10" x 16" x 1'-2" Bronze  
 5-Rs. 11" x 18" x 1'-5" C.I.





